

## CONTINUOUS INK SUPPLY SYSTEM INSTALLATION INSTRUCTION FOR EPSON Workforce WF-2530 WF-2540 printer

### Caution:

The ink reservoirs should always be placed on the same level as the printer; otherwise it will affect the ink flow to your printer and may cause your printer to flood with ink

Do not remove your old cartridge until you have the CIS system prepared and ready to install (to prevent the drying of heads). In addition, make sure the nozzle checks are perfect before installing the ST CIS system. The CIS system won't be able to work properly if the nozzles are clogged. Most people get a perfect nozzle check after installing the Continuous Ink Supply system while others may need to run two or three cleaning cycles and let the printer sit for a while before they get the perfect results.

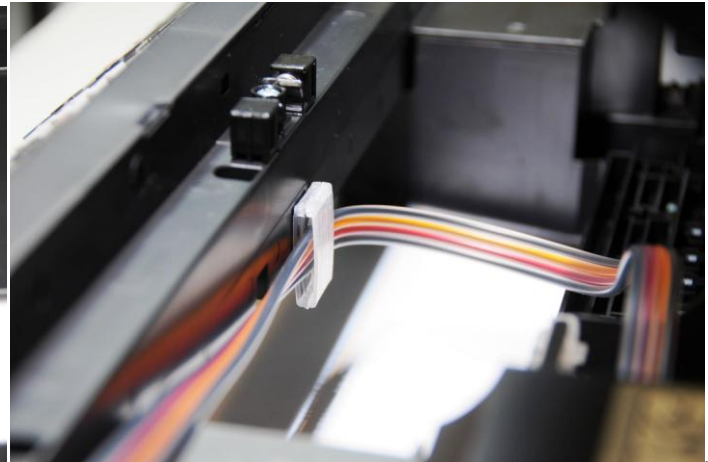
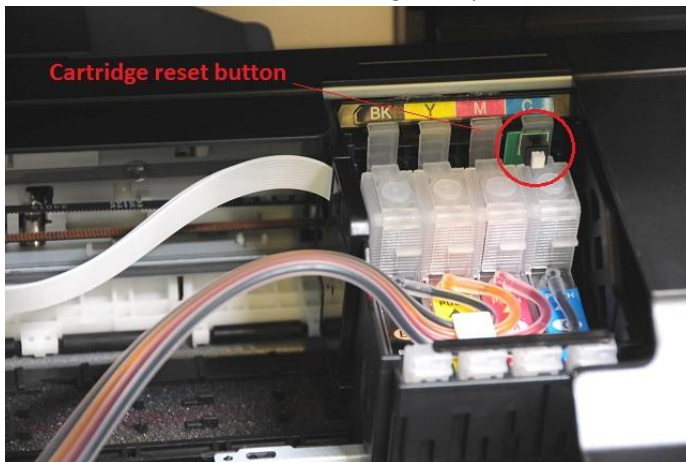
You might need to prime the CISS (remove air from the ink tube) before install it to your printer  
For how to prime the CISS, please go to our website: <http://www.inkxpro.com>  
Click "Knowledge Base" on the left side of the manual, then go to "HOW TO", you will find some videos which show you how to prime the CISS.

### 1. Printer testing:

1. Check whether the printer is in normal conditions, like the mechanical status and lubrication status etc.
2. Print testing lines to ensure that the printer head is good condition.
3. Print pictures to see whether the printed images are okay.

### 2. Installation Procedures:

1. Remove the original cartridges.
2. Place each cartridge in the correct position in the cartridge holder. Press down on the cartridges until you hear a click sound.
3. Install the tubes according to the pictures below.



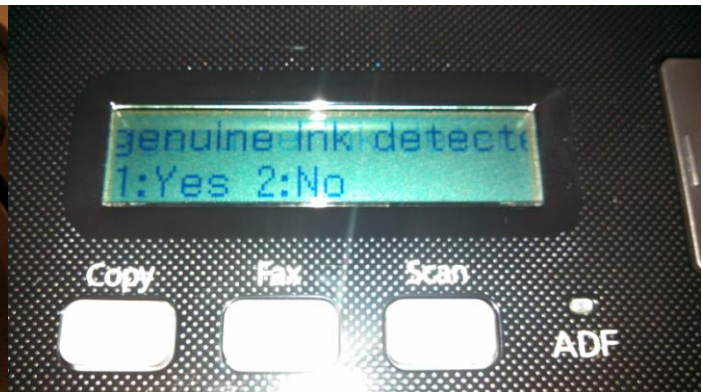
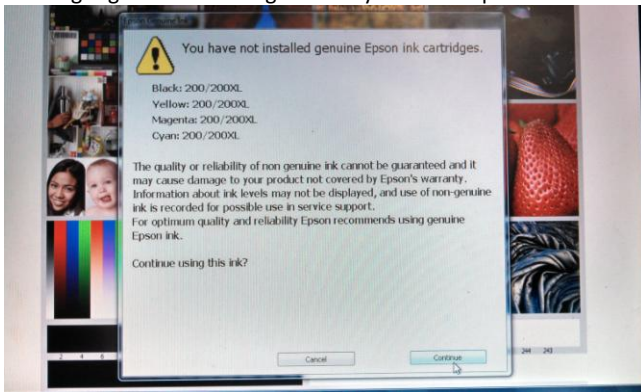
4. Adjust the tube length; make sure it doesn't block the cartridge holder move to left and right. please adjust the tube carefully, otherwise it might cause "paper jam" error when you print.

5. Unplug the small color plugs from the ink tank, this will open the system air vent.





You might get these messages when you start to print



1. Check the printing head. Run Nozzle check.

If the nozzle check shows breaks, please clean your printer head. It is possible that the wispy air have entered into the printing head. If it is stilling show little breaks, especially just in one color, you do not need to repeatedly continue to clean. Just keep the printer silent for about one hour, and it will most likely disappear.

If there still are some bubbles in the tube after install the system correctly, just run the head cleaning 1-3 times, ( do not clean more than 3 times, otherwise it might cause ink to flood on your bottom of printer. If there are still some air bubbles in the tube, just wait a few hours and then run head cleaning again. The bubbles will be gone after that.

After the bubble are gone, let the printer sit there for a few hours before printing anything. The quality will be good by then. If printing quality is good, you don't need to care about the air bubbles in the tube, it will be gone after some printing.

2. Reset the cartridges

Epson printer treat the CISS cartridges same as the original Epson cartridges. It will show the **“cartridge is not recognized”** message after you print certain number of pages. You need to press the reset button on the top of the cartridge for 5 seconds to reset the cartridge. Just like to replace the cartridges.