

**XPRO III Series CONTINUOUS INK SUPPLY SYSTEM INSTALLATION INSTRUCTION FOR
EPSON Workforce WF3640 WF3620 WF7110 WF7620 WF7610 printers**

This instruction might NOT provide all the information you need for this CISS installation, we strongly recommend watching the installation video in the Knowledge Base on our website: <http://www.inkxpro.com>

Caution:

Open the ink bottle refill holes (large plugs) first BEFORE opening the Air vents (small plugs) to release the air pressure inside the bottle. Otherwise, the ink may spill out of the air vents.

Install the CISS ASAP; don't wait until your original cartridges are empty before installing CISS. In case the CISS has a problem, you still have your original cartridges to fall back on.

It is recommended to Prime/Purge the CISS before installation.

Keep the system's air vents open at all times after installation.

Please keep ink reservoirs lower than the print head level; ELEVATING THE RESERVOIRS ABOVE THE LEVEL OF THE CARTRIDGES IN THE PRINTER MAY FLOOD THE UNIT WITH INK.

What's in the box:

1. Reservoir-supply tubes-cartridge assembly
2. CR2032 battery replacement
3. One switch jumper (rubber plug)
4. One supply tube clip
5. Four syringes (no needles, for prime the system)
6. One pair of latex-free gloves

Do not remove your old cartridge until you have the CISS continuous ink supply system prepared and ready to install (to prevent the drying of heads). In addition, make sure the nozzle checks are perfect before installing the CIS system. The CISS system won't be able to work properly if the nozzles are clogged.

Most people get a perfect nozzle check after installing the Continuous Ink Supply system while others may need to run two to three cleaning cycles and let the printer sit for a while before they get the perfect results.

Printer Testing

Before beginning, be sure your printer is operating properly with the original cartridges and is clean and properly adjusted. If the printer isn't printing properly, follow the printer instructions to clean and test the printer.

Prepare the CISS assembly:

1. Check to be sure there is no air in the tubes (a few inches air is ok) from the reservoirs to the cartridges. If air is present, you will need to PRIME the system.

For how to prime the CISS, please go to our website: <http://www.inkxpro.com>

Click "Knowledge Base" on the left side of the manual, then go to "HOW TO", you will find some videos which show you how to prime the CISS.

2. DO NOT REMOVE THE CLEAR TAPE ON THE BOTTOM OF THE INK CARTRIDGES! They will be punctured when inserted into the printer.

1. Installation Procedures:

1. Remove the original cartridges (**Use original Epson cartridge first for printer initialization before install the CISS**)
Press the "cartridge replacement" button, the cartridge will move to the changing position, remove the Epson ink cartridges.
2. Remove the cartridge cover.
You can pry the hinge off with the door cover on the right side with a flat blade screwdriver. This lid can be hard to remove. Please take your time. Sometimes the hinge might be break when it's been forced off.

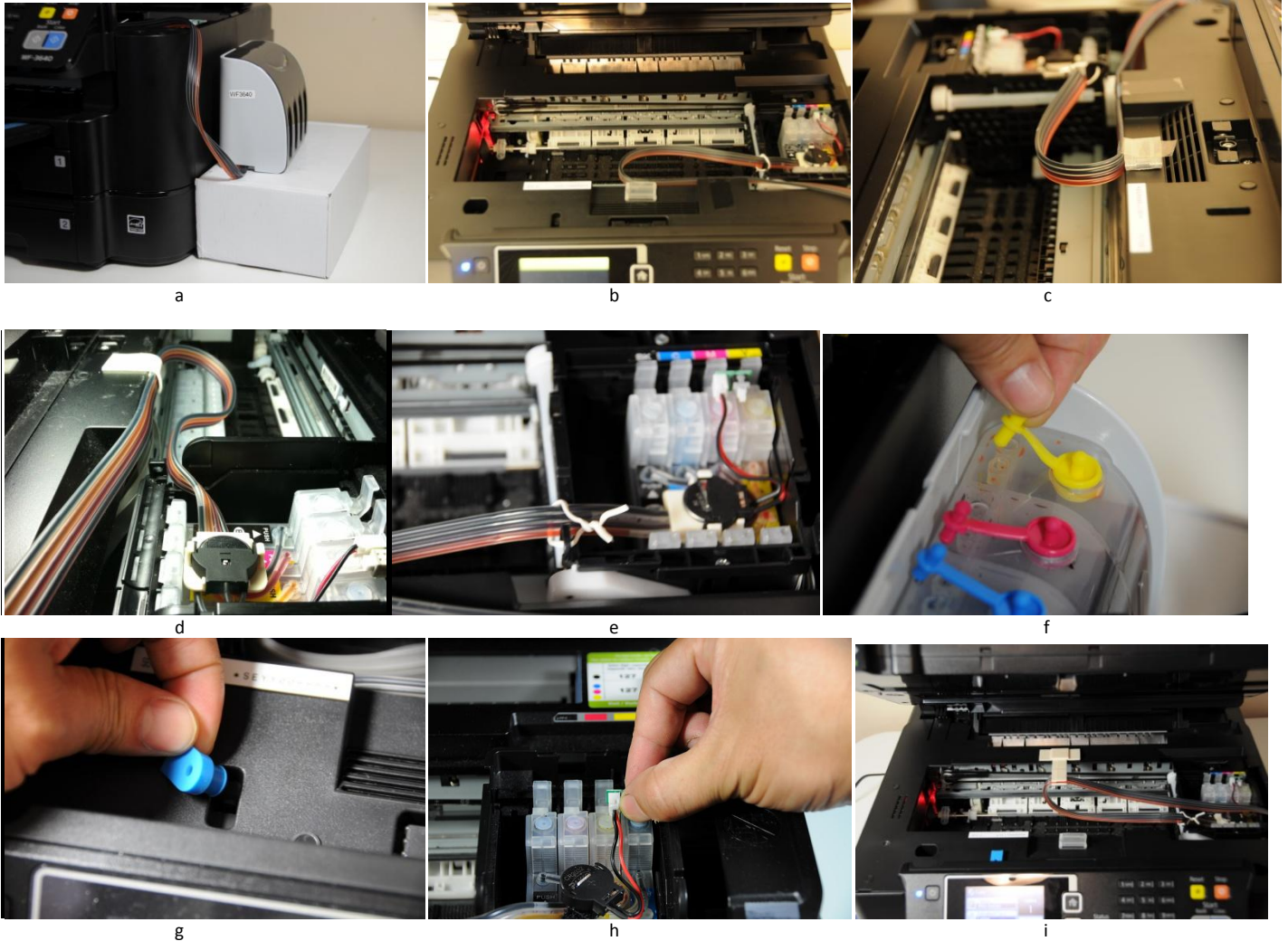


1

2

3

3. Place ink reservoir on the right side of the printer, normally same level as the printer. For double paper tray printer, place the ink reservoir on the top of 3 inches box to make it match the height of ink cartridge.
4. Install the CISS cartridge into the cartridge holder in the correct position according to the color. Press down on each cartridge firmly until you hear a click sound.
5. Use the **Strong Scotch tape (not included)**, to attach the ink tube to the printer by referring the pictures in the next page (Image a- b) and use a twist tie to lock the tube with cartridge holder. **With this setup, the scanner unit can be closed completely.** (for WF7110 printer, please refer Image i),
6. **Open the air vents of the ink system** (image f). Do NOT close the scanner unit; use the switch Jumper to lock the scanner unit switch censor (image g), so you can see the cartridge/tube moving and make tube setup adjustment if necessary.
7. After installing the CISS cartridge, the printer might indicate you are not using Epson genuine cartridges. When it asks "Do you want to continue to use this ink?" press "Yes" to continue.



There is a different setup using the T shape tube holder, where the scanner unit can't be closed completely. (Please watch our detail installation video on our website: www.inkxpro.com.)

8. Check the printing head. Run Nozzle check.

If the nozzle check shows breaks, please clean your printer head. It is possible that the wispy air have entered into the printing head. If it is stilling show little breaks, especially just in one color, you do not need to repeatedly continue to clean. Just keep the printer silent for about one hour, and it will most likely disappear. If, after testing, it is still abnormal, please kindly contact us ASAP.

If there still are some bubbles in the tube after installing the system correctly, just run head cleaning 1-3 times (do not clean more than 3 times; this may cause ink to flood to on your bottom of printer). If there still are some air bubbles in the tube, just wait a few hours and then run head cleaning again. The bubbles will be gone after that.

After the bubble are gone, let the printer sit for a few hours before printing anything. The quality should be good by then. If printing quality is good, you don't need to care about the air bubbles in the tube, they will be gone after some printing.

Maintenance:

How to reset the ink cartridge?

The cartridge ink level needs to be reset only when printer shows "cartridge has not been recognized", When the cartridge move over to the change cartridge position, press and hold the reset button (Image H) for 5 seconds then close the scanner unit or re-install the switch jumper.

"Paper jam error"

In most case, the paper jam error is not causing by paper, is causing by the ink tube jam up with cartridge moving. Please open the scanner unit to adjust the tube setup.

If you continue to get the message that cartridges can't be recognized or printer doesn't print well after install CISS, please go to our website: www.inkxpro.com

Click "Knowledge Base" On the left side of the page, then Click "Trouble Shooting"